

RE:- Palmerston Road, Ringwood.

PROPERTY:- Part Crown Portion. 3, Parish of Ringwood.

YOUR REF:- L. McNaughton.

A search for the **Last Registered Owner** of the above property resulted with copies of the following:-

1. L.A.S.S.I. For Current Map Base Information.
2. TITLES OFFICE CHART
Ringwood 6
3. CROWN GRANT
49849 / 1858 to S.G. ISAACS. (**Last Registered Owner**)
4. PLAN IN APPN:
1598 Showing the Land remaining in the above Crown Grant.
5. 26F:- NIL, see sheet attached.

15.11.2021

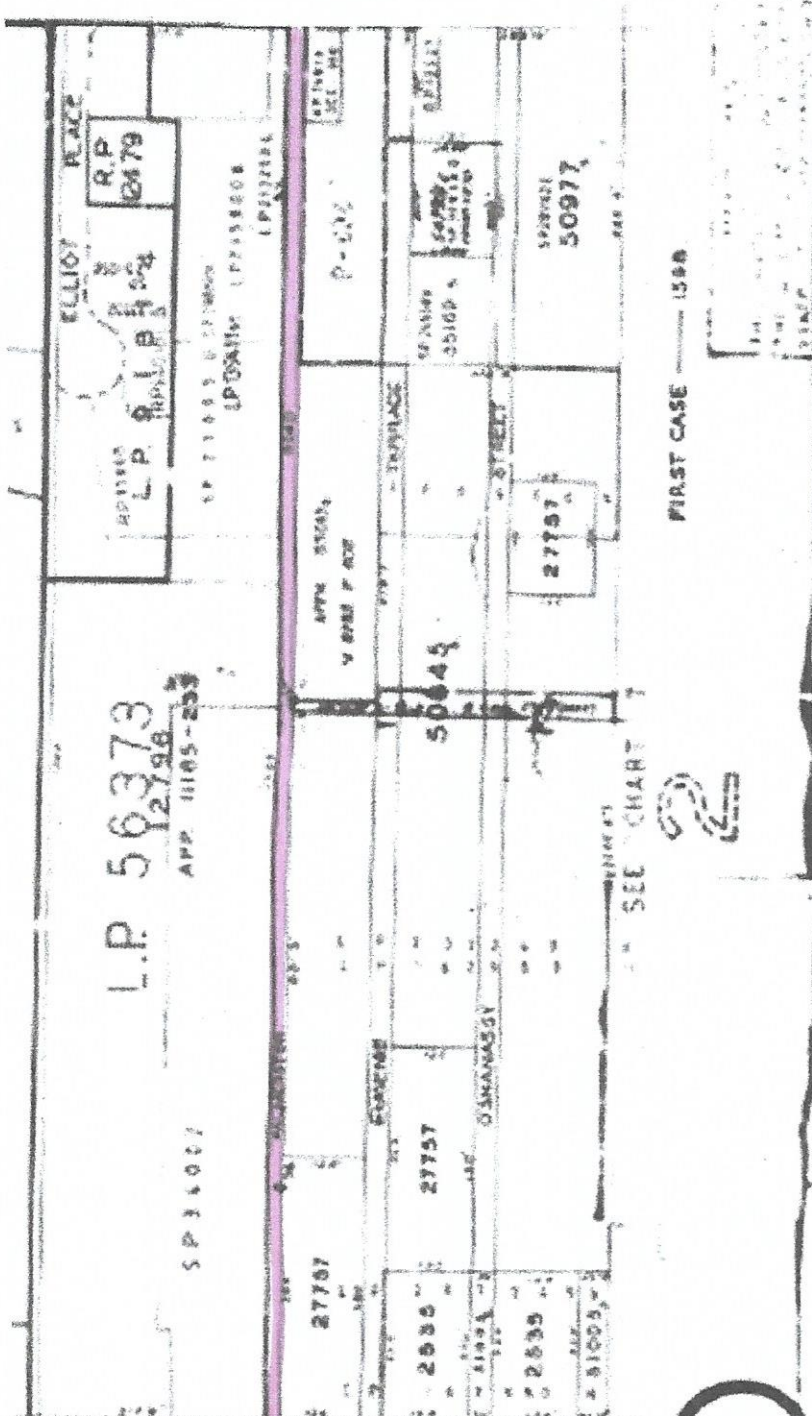


Graeme W. Keeshan.
0422 472 969
FEIGL & NEWELL
GPO BOX 2343
Melb 3001
Ph. 9629 3011.

Email. info@feiglnewell.com.au

DISCLAIMER:- A search for the last registered owner may not disclose all easements, subsisting interests affecting the above property or guarantee the consistency of the Chain of Title.

Due to changes in procedures at the Lands Titles Office, this search is as accurate as the information contained herein at the date of this search.



BASE RECORD RECORDED
DATE _____

3452 (6)
RINGWOOD
CROWN PORT 3

FIRST CASE 1598

SEE CHART

L.P. 56373
12798
APP. 1105-253

SP 31007

R.P. 12679

L.P. ROAD

SP 11000 U.S. DISTRICT COURT
L.P. ROAD

ARKANSAS
ST. NO.

MISSOURI

INDIANA

ILLINOIS

MISSOURI

ARKANSAS

LOUISIANA

GEORGIA

FLORIDA

ALABAMA

MISSISSIPPI

LOUISIANA

GEORGIA

FLORIDA

ALABAMA

MISSISSIPPI

LOUISIANA

GEORGIA

FLORIDA

ALABAMA

MISSISSIPPI

LOUISIANA

GEORGIA

FLORIDA

ALABAMA

MISSISSIPPI

LOUISIANA

GEORGIA

FLORIDA

ALABAMA

MISSISSIPPI

LOUISIANA

GEORGIA

FLORIDA

ALABAMA

MISSISSIPPI

LOUISIANA

GEORGIA

FLORIDA

ALABAMA

MISSISSIPPI

LOUISIANA

GEORGIA

FLORIDA

ALABAMA

MISSISSIPPI

LOUISIANA

GEORGIA

FLORIDA

ALABAMA

MISSISSIPPI

LOUISIANA

GEORGIA

FLORIDA

ALABAMA

MISSISSIPPI

LOUISIANA

GEORGIA

FLORIDA

ALABAMA

MISSISSIPPI

LOUISIANA

GEORGIA

FLORIDA

ALABAMA

MISSISSIPPI

LOUISIANA

GEORGIA

FLORIDA

ALABAMA

MISSISSIPPI

LOUISIANA

GEORGIA

FLORIDA

ALABAMA

MISSISSIPPI

LOUISIANA

GEORGIA

FLORIDA

ALABAMA

MISSISSIPPI

LOUISIANA

GEORGIA

FLORIDA

ALABAMA

MISSISSIPPI

LOUISIANA

GEORGIA

FLORIDA

ALABAMA

MISSISSIPPI

LOUISIANA

GEORGIA

FLORIDA

ALABAMA

MISSISSIPPI

LOUISIANA

GEORGIA

FLORIDA

ALABAMA

MISSISSIPPI

LOUISIANA

GEORGIA

FLORIDA

ALABAMA

MISSISSIPPI

LOUISIANA

GEORGIA

FLORIDA

ALABAMA

MISSISSIPPI

LOUISIANA

GEORGIA

FLORIDA

ALABAMA

MISSISSIPPI

LOUISIANA

GEORGIA

FLORIDA

ALABAMA

MISSISSIPPI

LOUISIANA

GEORGIA

FLORIDA

ALABAMA

MISSISSIPPI

LOUISIANA

GEORGIA

FLORIDA

ALABAMA

MISSISSIPPI

LOUISIANA

GEORGIA

FLORIDA

ALABAMA

MISSISSIPPI

LOUISIANA

GEORGIA

FLORIDA

ALABAMA

MISSISSIPPI

LOUISIANA

GEORGIA

FLORIDA

ALABAMA

MISSISSIPPI

LOUISIANA

GEORGIA

FLORIDA

ALABAMA

MISSISSIPPI

LOUISIANA

GEORGIA

FLORIDA

ALABAMA

MISSISSIPPI

LOUISIANA

GEORGIA

FLORIDA

ALABAMA

MISSISSIPPI

LOUISIANA

GEORGIA

FLORIDA

ALABAMA

MISSISSIPPI

LOUISIANA

GEORGIA

FLORIDA

ALABAMA

MISSISSIPPI

LOUISIANA

GEORGIA

FLORIDA

ALABAMA

MISSISSIPPI

LOUISIANA

GEORGIA

FLORIDA

ALABAMA

MISSISSIPPI

LOUISIANA

GEORGIA

FLORIDA

ALABAMA

MISSISSIPPI

LOUISIANA

GEORGIA

FLORIDA

ALABAMA

MISSISSIPPI

LOUISIANA

GEORGIA

FLORIDA

ALABAMA

MISSISSIPPI

LOUISIANA

GEORGIA

FLORIDA

ALABAMA

MISSISSIPPI

LOUISIANA

GEORGIA

FLORIDA

ALABAMA

MISSISSIPPI

LOUISIANA

GEORGIA

FLORIDA

ALABAMA

MISSISSIPPI

LOUISIANA

GEORGIA

FLORIDA

ALABAMA

MISSISSIPPI

LOUISIANA

GEORGIA

FLORIDA

ALABAMA

MISSISSIPPI

LOUISIANA

GEORGIA

FLORIDA

ALABAMA

MISSISSIPPI

LOUISIANA

GEORGIA

FLORIDA

ALABAMA

MISSISSIPPI

LOUISIANA

GEORGIA

FLORIDA

ALABAMA

MISSISSIPPI

LOUISIANA

GEORGIA

FLORIDA

ALABAMA

MISSISSIPPI

LOUISIANA

GEORGIA

FLORIDA

ALABAMA

MISSISSIPPI

LOUISIANA

GEORGIA

FLORIDA

ALABAMA

MISSISSIPPI

LOUISIANA

GEORGIA

FLORIDA

ALABAMA

MISSISSIPPI

LOUISIANA

GEORGIA

FLORIDA

ALABAMA

MISSISSIPPI

LOUISIANA

GEORGIA

FLORIDA

ALABAMA

MISSISSIPPI

LOUISIANA

GEORGIA

FLORIDA

ALABAMA

MISSISSIPPI

LOUISIANA

GEORGIA

FLORIDA

ALABAMA

MISSISSIPPI

LOUISIANA

GEORGIA

FLORIDA

ALABAMA

MISSISSIPPI

LOUISIANA

1590

6433 14726
9476 17457

117

VICTORIA.—LAND PURCHASE.

Victoria, by the Grace of God of the United Kingdom of Great Britain and Ireland, Queen, Defender of the Faith, and so forth. To all to whom these Presents shall come, Greeting:—

49849

Whereas in conformity with the Laws now in force for the Sale of Crown Lands in Our Colony of VICTORIA, and Our Royal Instructions under Our Signet and Sign Manual issued in pursuance thereof, the person hereinafter named and described has become the Purchaser of the Land hereinafter described, for the Sum of

One hundred and forty eight pounds eleven shillings and two pence

sterling: Now Know Ye, THAT for and in consideration of the said Sum for and on Our behalf, well and truly paid into the Treasury of Our said Colony, before these Presents are issued, And in further consideration of the Quit-Rent hereinafter reserved, WE HAVE GRANTED, and for Us, Our Heirs and Successors, DO HEREBY GRANT unto

Samuel George Peases of Elizabeth Street Melbourne

his Heirs and Assigns, subject to the several and respective Reservations hereinafter mentioned, ALL THAT Piece or Parcel of Land in Our said Colony, containing by Admeasurement one hundred and forty eight acres two roods and nine perches

be the same more or less,

situated in the County of Bromington Parish of Ringwood

Portion three bounded on the north by a road three chains wide bearing South eighty three degrees thirty minutes East eight chains thirty seven links North eighty degrees ten minutes East fourteen chains ninety eight links and South eighty five degrees forty seven minutes East six chains ninety eight links on the East by portion six bearing South fifty chains thirty eight links on the South by portion two bearing West thirty chains and on the West by a road one chain wide bearing North forty nine chains eighteen links

being the Land Sold at Melbourne Lot Number 22 in pursuance of the Proclamation of the second day of February One thousand eight hundred and fifty-eight with all the Rights and Appurtenances whatsoever thereto belonging; To Hold unto the said

Samuel George Peases

his Heirs and Assigns for ever, YIELDING and paying therefor yearly unto Us, Our Heirs and Successors, the Quit-Rent of one Peppercorn for ever, if demanded: Provided Nevertheless, AND WE DO HEREBY RESERVE unto Us, Our Heirs and Successors, all such parts and so much of the said Land as may hereafter be required for making Public Ways, Canals, or Railroads, in, over, and through the same, to be set out by OUR GOVERNOR for the time being of Our said Colony, or some Person by him authorized in that respect; AND ALSO, all Sand, Clay, Stone, Gravel, and Indigenous Timber, and all other Materials, the natural produce of the said Land, which may be required at any time or times hereafter for the construction and repair of any Public Ways, Bridges, Canals, and Railroads, or any Fences, Embankments, Dams, Sewers, or Drains, necessary for the same, together with the right of taking and removing all such Materials: AND WE DO HEREBY FURTHER RESERVE unto Us, our Heirs and Successors, the right of full and free ingress, egress, and regress into, out of, and upon the said Land, for the several purposes aforesaid; In Testimony Whereof, We have caused this Our Grant to be sealed with the Seal of Our said Colony.

WITNESS Our Trusty and Well-beloved SIR HENRY BARKLY, Knight Commander of the Most Honorable Order of the Bath, Captain-General and Governor-in-Chief of Our said Colony, and Vice-Admiral of the same, at Melbourne, VICTORIA, aforesaid, this eleventh day of May in the Twenty-first Year of Our Reign, and in the Year of Our Lord One thousand eight hundred and fifty-eight

L.S. (Signed) Henry Barkly
MEMORANDUM AND INCLUDED
HEREIN HAD BEEN BROUGHT UNDER
THE TRANSFER OF LAND ACT.
C. H. Simchaer
ASSISTANT REGISTRAR OF TITLES

86
64
1980

480
480
160
480
380
1980

762

1175

2400
1476
3883
3742
141

3000

Henry Leverfont
12796

70
43

Palmettoe Road 16' 6" wide

441' 6"



136' 6"
153'
32'
120'

441' 6"

866
604
258
1918
140

51005

Plan to AP. 1598.

| | | | | | | | |
|---------------------------------|---|--------------------------------------|-----------|------------------------|---|------------------------------------|--------------------------|
| MOOLAP | | PORT 14 BLOCK 1 | AP121276E | 113461 | X818877N | TP22972Y | 17/10/2001 |
| MOORABBIN | (? PT 18 BLOCK 11 BRIGHTON ESTATE ?) | DENDY'S CROWN SPECIAL SURVEY (PT) | AP130330A | | AL100329N | TP954531H | 22/05/2014 |
| MOORPANYAL | | CA 8 (PT) SEC 8 | AP131474T | 112673 | AL420512M | TP956019H | 14/10/2014 |
| MOORPANYAL | PS543275E (X35 PLAN) | PORT 5 SEC A | AP123637M | 110596 | AD201434X AJ205806M | TP848595W NOW LOT 2/PS543275 | 26/10/2004 |
| MOORPANYAL | | CA 100 (Pt) | AP125701U | Bk 196 No 906 | PS518320U | TP932521K | 18/6/2008 |
| MOORPANYAL | | CA 185 (PART) | AP130743X | Bk 700 No471 | AL217667P | TP955218G | 10/7/2014 |
| NILLUMBIK | | POR 12 SEC 4 (PART) | AP126530Q | Bk 244 No 80 (PART) | AH168490H | LOT 2/ TP945297P | 20/4/2010 |
| PURNIM | | PORT 57 (PT) | AP129062G | 88713 | AK457103G | TP952510C | 11/07/2013 |
| ROCHESTER | | PORT's 6 (pt) & 7 (pt) | AP119017T | 114959 | AG670731U | TP24201T | 4/ 8/2009 |
| SANDHURST AT BENDIGO | | C/A's 12 & 13 SEC 21B | AP128892S | 118784 | AK327989K | TP951911N | 07/05/2013 |
| SANDHURST AT EAGLEHAWK | | CA 2 SEC 3 | AP126891F | 90177 | AH681635U & AH681636S & AN245734A | TP947096P | 20/12/2010 |
| SPRING HILLS | | PORT 48 & 49 (PT) | AP121067P | 84423 | X534769D | TP22194X | 14/ 6/2001 |
| TARNEIT | | C/P's B & D SEC 18 | AP119120B | 118626 | AJ517716X (CP B only) | TP945842Q | 9/6/2010 & 28/02/2012 |
| TARRAGAL | | CA 12 SEC 4 | AP122480A | 103706 | AB939955T | TP824814W | 13/ 3/2003 |
| TARRAWARRA | AP141387G | POR 9 (PT) SEC B | AP136236J | 97481 | AN103336H | TP961079J | 15/9/2016 |
| TOOBORAC | | C/A 3(Pt) SEC 3 | AP126654V | 117256 | AH337531F AJ212050D | TP946181E | 2/7/2010 |
| TRUGANINA | | C/A 1(Pt) SEC 26 | AP126714E | Book 443 No 328 | | TP946387H | 11/8/2010 |
| WABDALLAH | | CA'S 1A & 2A SEC 15 | AP120138X | 108680/1 | V946974T | 2/TP950301X | 17/ 3/1999 |
| WODONGA | PS538205G | PORT 1 SEC E3 | AP79575A | 116877 | W0544466B | PS538205G | 19/ 5/1999 |
| WODONGA & T'SHIP OF WODONGA | | C.A. 14 SEC C | AP126298R | 105972 | AG807265Q | TP944532M | 12/10/2009 |
| WOLLERT & TOWNSHIP OF EPPING | AP131127R (SEC 23) | PART C.A. 1 SECTION 1 | AP123971Y | 108888 | AD653130V | TP858217A | 31/5/2005- |
| YERING | | C/A D SEC 21(WH) | AP132634S | 108388 | AL862064V | TP957425Q | 5/5/2015 |
| YERING TOWNSHIP OF LILYDALE | | CA 5 SEC 4 (PART) | AP126318N | 108997 | AG856120R | TP944680V | 9/11/2009 |